

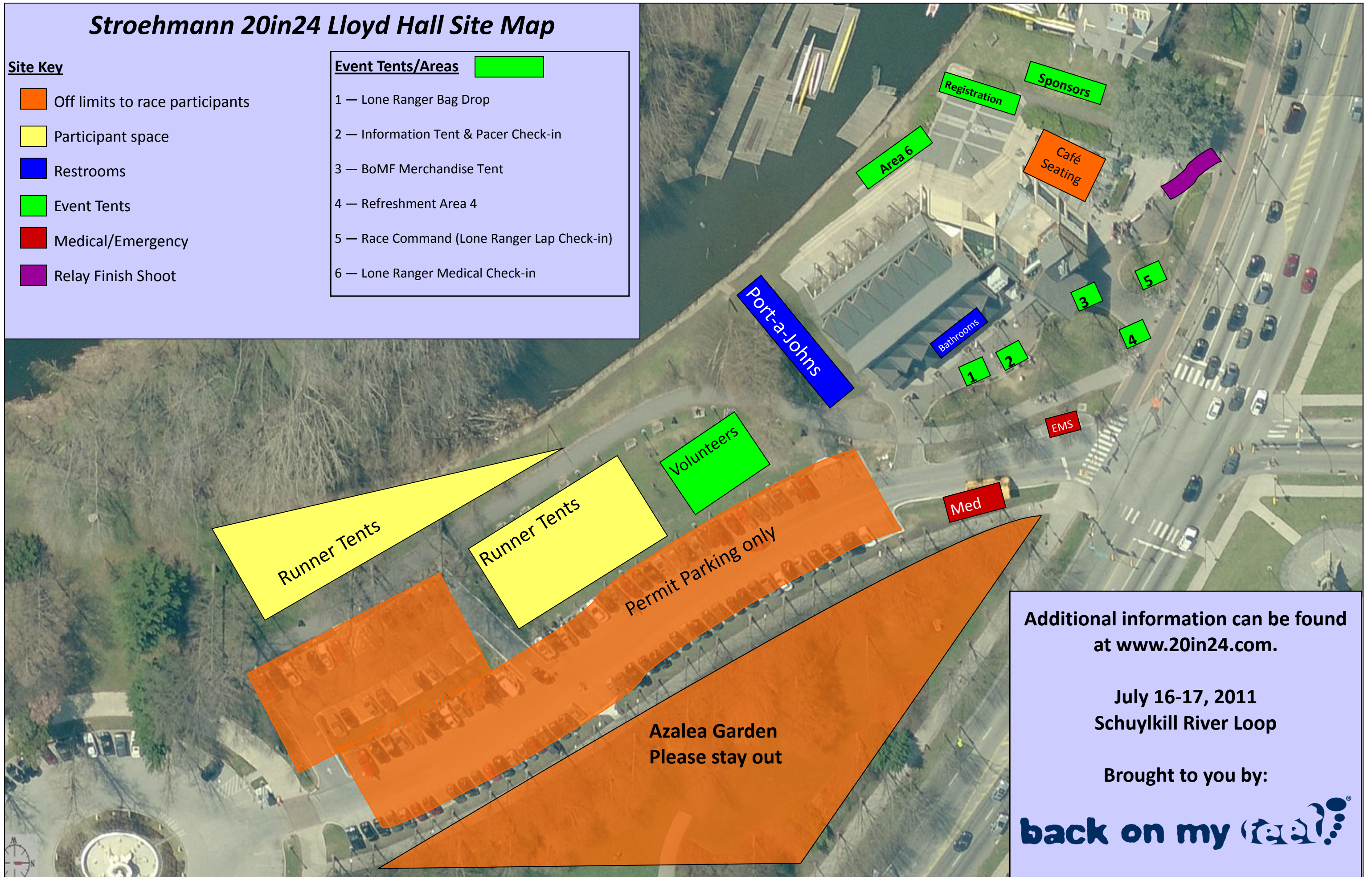
Stroehmann 20in24 Lloyd Hall Site Map

Site Key

- Off limits to race participants
- Participant space
- Restrooms
- Event Tents
- Medical/Emergency
- Relay Finish Shoot

Event Tents/Areas

- 1 — Lone Ranger Bag Drop
- 2 — Information Tent & Pacer Check-in
- 3 — BoMF Merchandise Tent
- 4 — Refreshment Area 4
- 5 — Race Command (Lone Ranger Lap Check-in)
- 6 — Lone Ranger Medical Check-in



Additional information can be found at www.20in24.com.

July 16-17, 2011
Schuylkill River Loop

Brought to you by:

